

No' Money, Mo' Problems: Cost & Time-Saving Strategies for Academic Library Resource Budgets

Presented by Courtney Cooney, MPH, MLIS
Kettering University Library, Flint, MI



Outline

01

Background

About Me. Institution. Library. Budgets.

02

Prep Work

Be Ready.

03

Savings Strategies

Cost & Time

04

Next Steps

Keep on' Keepin' On.



01

Background

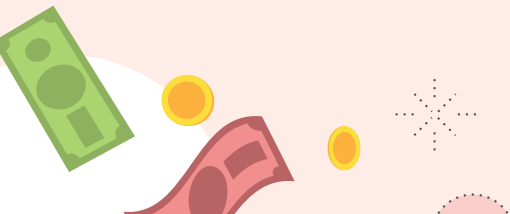
About Me. Institution. Library. Budgets.

About Me

- Flintstone (2/3 Criteria)
- Special Library Focus
 - MSU, 2008-2014, Business
 - CMU Health, 2015-2019, Medical
 - Kettering University, 2019-Present, STEM
 - ER Librarian>Head of Collections Access
 - Instructional Faculty
- Student Bowling Club Faculty Advisor
- Avid Bowler



Courtney Cooney, MPH, MLIS



Kettering University



- Located in Flint, MI
- Since 1919/Name Changes
 - The School of Automobile Trades (1919)>
 - General Motors Institute (GMI) (1926)>
 - GMI/Engineering and Management Institute (1982)>
 - Kettering University (1998)
- Private Non-Profit STEM
 - Physical/Some Virtual
 - 11 Week Terms/Co-Op Program
 - Culminating Thesis

KU Library & Archives/Special Collections

- **Three Physical Locations**
 - Academic Building - Print/Offices
 - Learning Commons - Services
 - Factory One - Archives
- **Staffing (Small, but Mighty)**
 - 4 Librarians (8 Total)
- **Resources**
 - Primarily Digital & 37k Print Books in AB
- **Consortiums**
 - MCLS = Content & Dalnet = Systems
- **Systems**
 - ILS = Alma (Past Perfect for Archives)
 - Discovery = PrimoVE
 - ILL = OCLC InterLibrary Loan
 - IR = Digital Commons



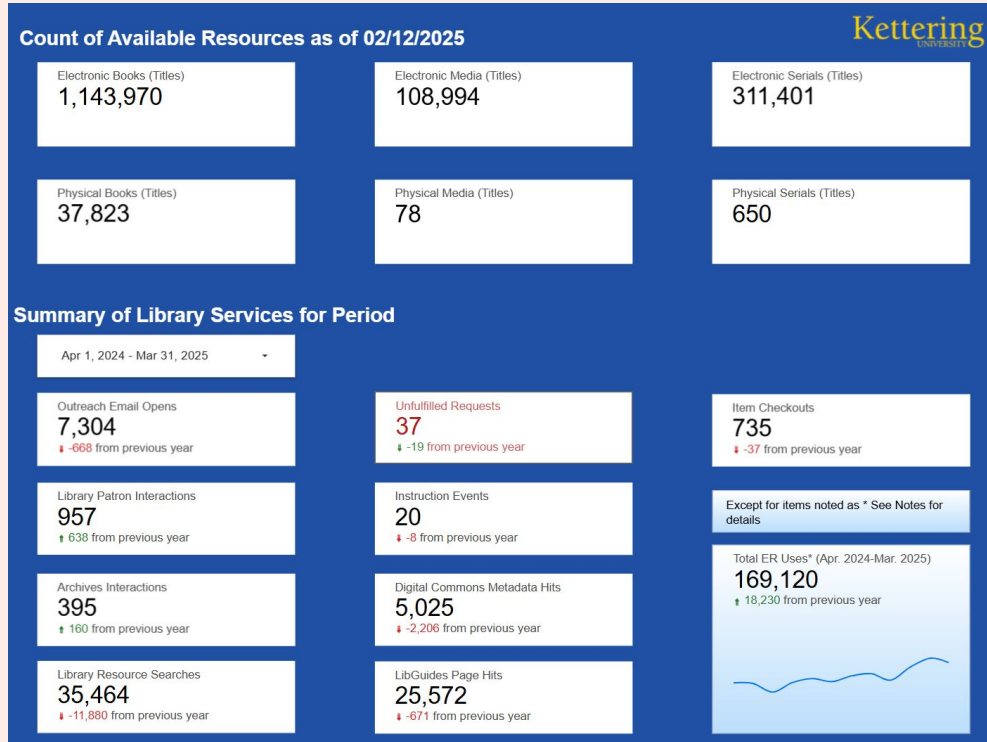
TOUR ON TUESDAY
AFTER CONFERENCE

About Academic Resource Budgets

- **Financial System** = Ellucian Banner
- **Fiscal Years**
 - July-June / Accrual Accounting
 - No Rollover - Use it or you might lose it!
- **Library Index**
 - **Account Level Types**
 - Fixed and Operating / Supplies
 - **Accounts**
 - Memberships & Subscriptions, etc.
- **About 40% (36% last FY) funds material based**
 - Includes: Databases, Print & Electronic Books/Journals, Physical & Streaming Media, etc.
- **Challenges?**
 - Inflation - Fight the good fight.
 - Justification - Be ready!



Data Visualization Dashboard



URL: https://lookerstudio.google.com/s/p_seVozrQ78

Every number tells a story





02

Prep Work

Be Ready.

Data Points

- Pricing Models (FTE/Carnegie)
- Collection Development Policy
- Program Enrollment
- Cost-per-Use (CPU)
- Access Denials/Turnaways



FTE or Carnegie Classification



- Both are Pricing Models
- Full Time Equivalent (FTE)
 - 1808 FY 24-25
 - Students vs. Faculty/Staff
- Carnegie Classification
 - Special Focus: Technology, Engineering, and Sciences
- Be Ready
 - Request 1-2 times per Year
 - October, after iPeds

Does it support the curriculum?



Collection Development Policy

Does your library have one?



Programs- New/Current

Is the collection staying relevant?



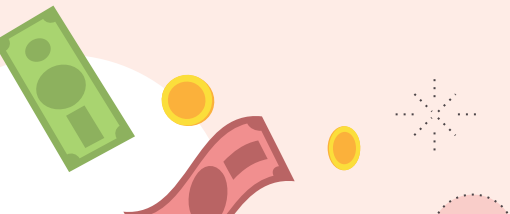
Cost-Per-Use (CPU)

Are you getting the most bang for your buck? Are you considering program enrollment?



Cost-Per-Use (CPU)

- Google Sheets vs. Alma Analytics
 - Selective
 - Aggregator
- Over \$50/Watch List
- CPU Considerations
 - Program Enrollment
 - Faculty Feedback



Access Denials/Turnaways



- Behind the Scenes
- Identify Collection Gaps
- Vendor Sales Tactic
- ILL Relationship
- Alma Analytics>Google Sheets
- Reviewed Biannually

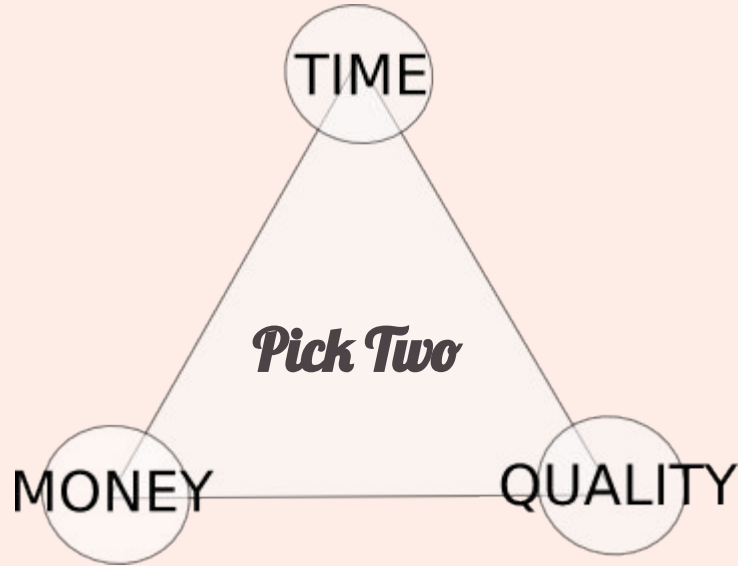


03

Strategies

Cost & Time.

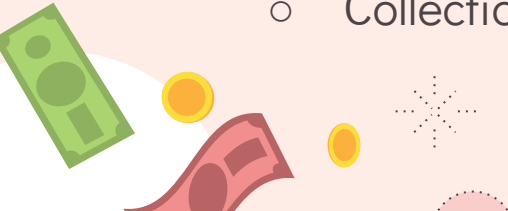
Project Management Triangle



PurplePieman at English Wikibooks, CC BY-SA 3.0 <<https://creativecommons.org/licenses/by-sa/3.0/>>, via Wikimedia Commons

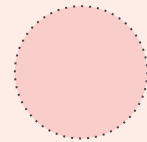
Collections Council

- Monthly Meetings
- Liaison Librarians + Special Collections Curator + Admin
- Agenda Items
 - Requests (Patron & Staff)
 - Upcoming Renewals
 - Vendor Offers/News
 - Curriculum/Program Updates
 - Collections Projects






Resource Acquisition Types





New



- Trial- Internal or Campus?
 - Usage- Sushi or Manual?
 - Access- IP/SSO (No Individual Codes)
 - Cost/Quote
 - Tiered Access?
 - Share Costs?
 - Consortium/Group Purchasing Available?
 - Inflation Control
 - Multi- Year/Opt-Out Clause
 - Negotiate/Push back
 - Competitor Products?
 - Benchmarking?
 - Wish List for EOY Funds
- 



- Really Understand Content/Platforms
 - Ask Questions
 - Review Usage/Downgrade?
- Calculate CPU
 - Watch List?
 - Multi-year/No CPU, just usage review
- Cost/Quote
 - Updated FTE/CC on File?
 - Inflation Reasonable?
 - Involve other Stakeholders
- Walk Away Point
 - Manpower Costs
 - Annual 15% Increase

Existing





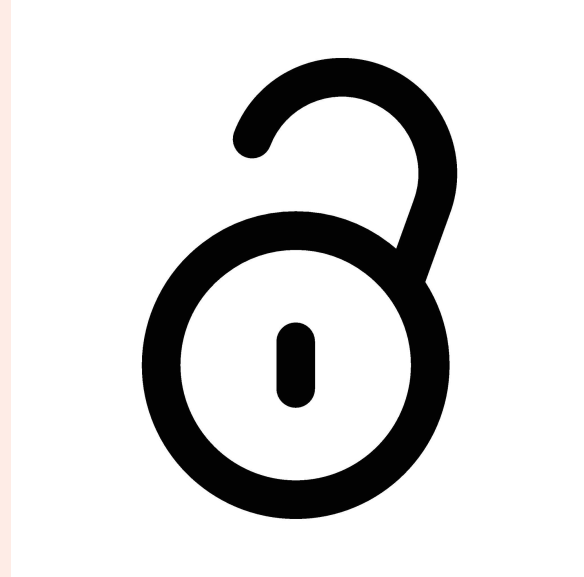
04

Next Steps

Keep on Keepin' On.

Open Access/Open Educational Resources

- Free/No Cost
- Need Institution Support?
- Direct to Open (D2O) Programs
- OA Publishing = High APC Fees
 - Transformative Agreements
 - Cost Inclusive
 - No/Minimal APC Fees



Grants



- Federal / State / Private / Vendor
- Private vs. Public vs. Organization
 - Conference = LSTA Grant
- Equipment or Services
 - Digitization
 - Professional Development
 - Open Access Publishing
- Institutional Grants
 - Grant Support

Immersion



- Be Involved / Get Out There
- Join Committees
- Embrace Change
- Librarian Liaisons
 - Reach out to Departments
 - Roving Reference
 - Speaker Events
- Attend/Present at Conferences

References

File:Time-Quality-Money.png. (2020, September 28). *Wikimedia Commons*. Retrieved May 19, 2025 from <https://commons.wikimedia.org/w/index.php?title=File:Time-Quality-Money.png&oldid=474822650>.

Smith, M. (2018). Living in Denial: The Relationship between Access Denied Turnaways and ILL Requests. *Serials Librarian*, 75(1–4), 31–41.
doi: <https://doi.org/10.1080/0361526X.2019.1593914>.

W, C. B. (2023). Strategies for E-resource renewals in a post-covid economy. *Ticker*, 8(2)
Doi: <https://doi.org/10.3998/ticker.5033>.

U.S. Department of Education (2020). IPEDS Statistical tables function using fiscal year 2020 Academic Library data. Retrieved May 18, 2025 from <https://nces.ed.gov/ipeds/survey-components/1>



Thank you!

Do you have any questions?

ccooney@kettering.edu

1-810-762-7821

<https://researchprofiles.kettering.edu/en/persons/courtney-cooney>



CREDITS: This presentation template was created by [Slidesgo](#), and includes icons by [Flaticon](#), and infographics & images by [Freepik](#)

